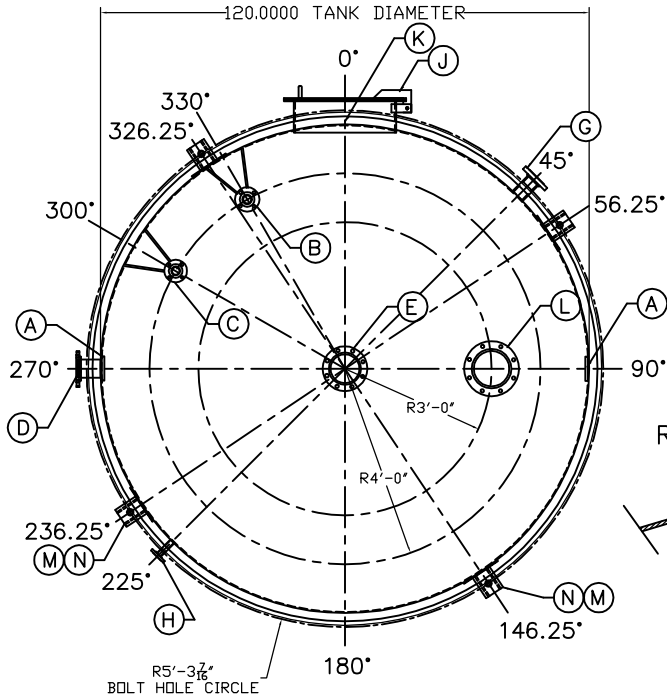
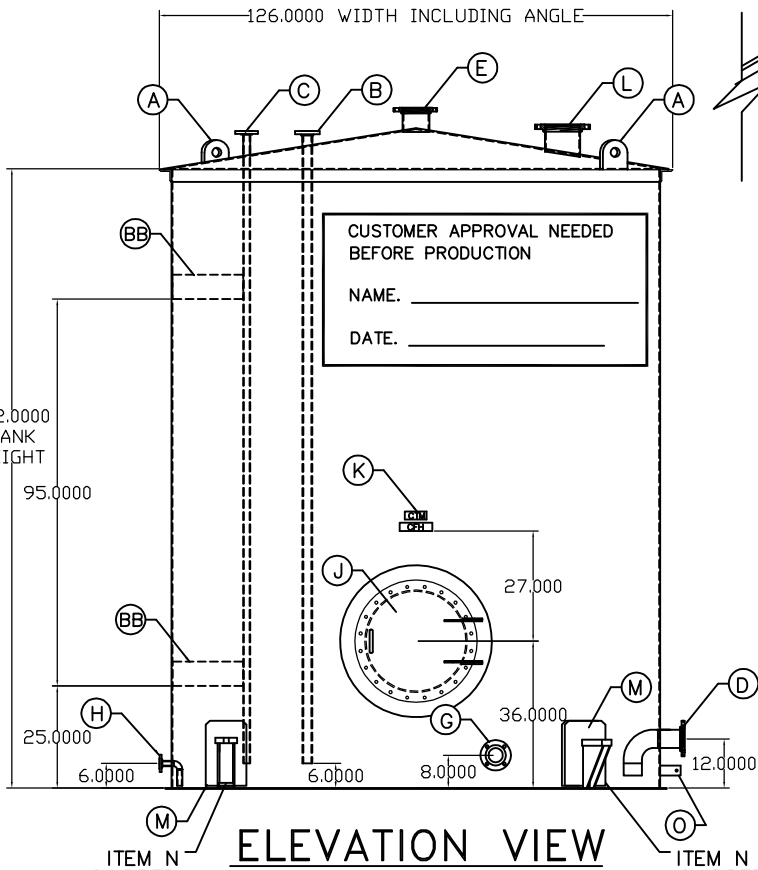


ALL WETTED MATERIAL SHALL BE SA-304 SS.
DESIGN, FABRICATE TO API 650 APPENDIX S & E
DESIGN PRESSURE: 2.5
DESIGN TEMP: 200° F
LIQUID LEVEL: FULL, SG = 1
JOINT EFFICIENCY = .7
SEISMIC: UBC 97, ZONE 1
WIND 90 MPH ASCE 7-05



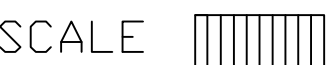
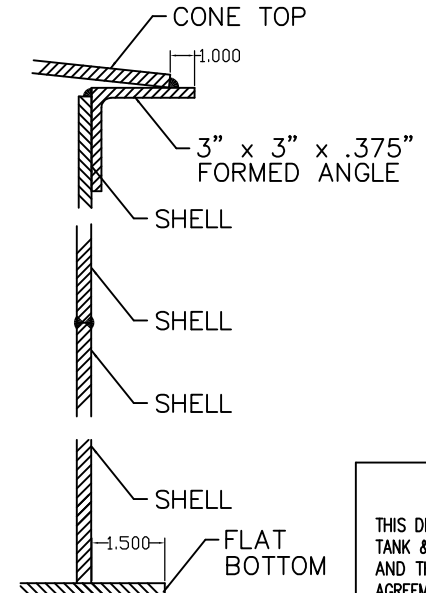
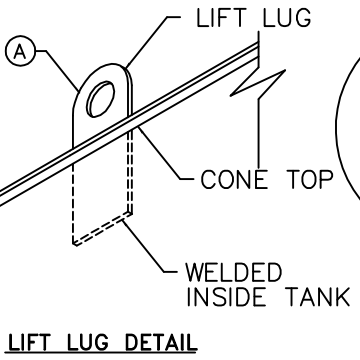
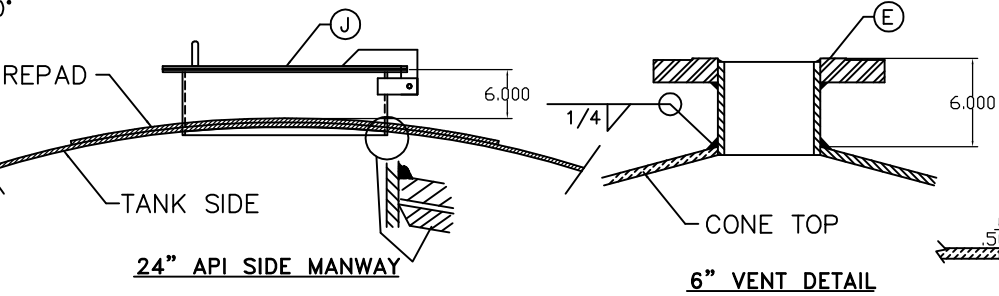
TOP VIEW



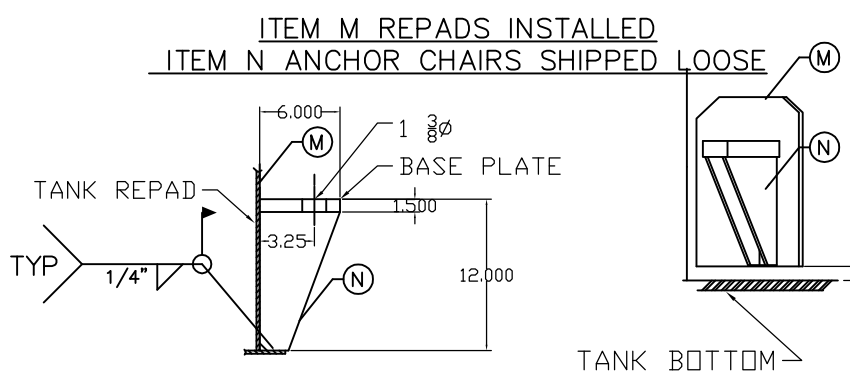
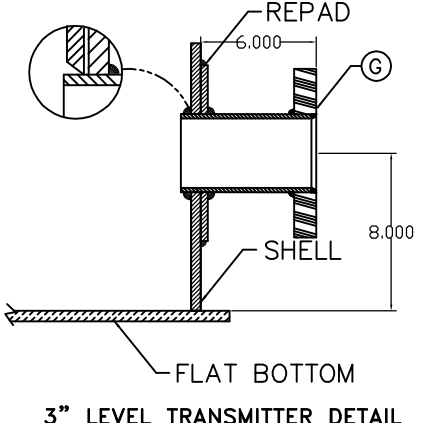
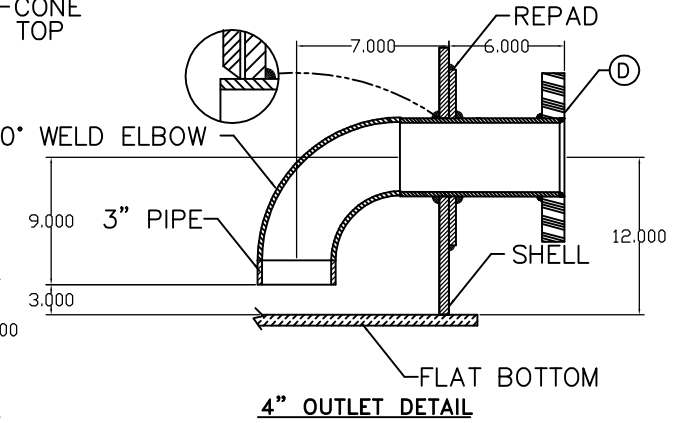
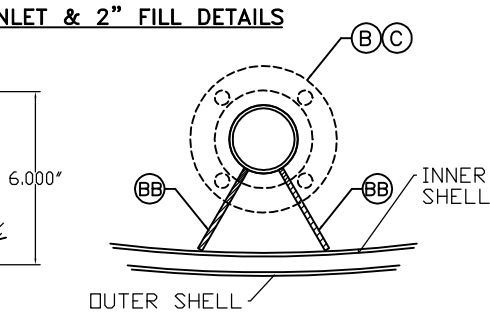
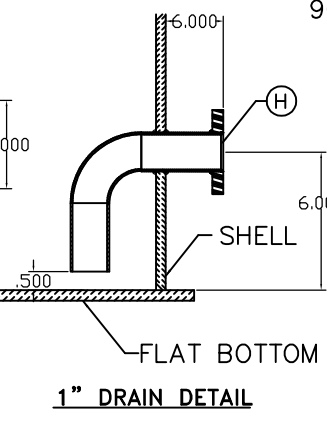
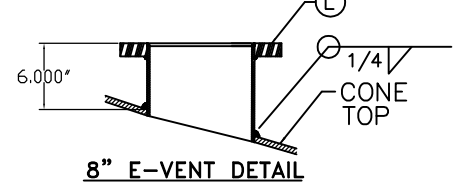
ELEVATION VIEW

(SEE TOP VIEW FOR FITTING LOCATIONS)

MATERIAL DESCRIPTION				
MODEL	KEY	QTY	VERTICAL SINGLE WALL API 650 304 STAINLESS STEEL TANK	
DIAMETER			10'-0"	
HEIGHT			12'-8"	
OVER ALL HEIGHT			14'-0"	
CAPACITY			7,400 NOMINAL	
FLAT BOTTOM			1/4" 304 SS 123Ø DIAMETER	
SHELLS			1/4" 304 SS	
CONE TOP			1/4" 304 SS	
ERECTION LUGS	A	2	2- 5/8" x 6" x 12" 304 SS WITH 2" HOLE	
INLET (PME234B)	B	1	2" #150 SORF NOZZLE 304 SS	
PIPE SUPPORTS	BB	8	PIPE SUPPORT, 3/8" CUT TO FIT 304 SS	
INLET (PME106)	C	1	1.5" #150 SORF NOZZLE 304 SS	
OUTLET	D	1	4" #150 SORF EL. NOZZLE 304 SS W/ REPAD	
VENT	E	1	6" #150 SORF NOZZLE 304 SS	
LEVEL TRANSMITTER	G	1	3" #150 SORF NOZZLE 304 SS W/ REPAD	
DRAIN	H	1	1" #150 SORF EL. NOZZLE 304 SS	
SIDE ACCESS	J	1	24" API MANWAY W/GARLOCK 3000 (BLUE) GASKET (BOLT TYPE) 304 SS W/ REPAD	
LABELS	K	AR	CTM & CFH	
EMERGENCY VENT	L	1	8" #150 SORF NOZZLE 304 SS	
HOLD DOWN REPAD	M	4	7GA 10" x 16" REPAD 304 SS FOR ANCHOR CHAIRS	
HOLD DOWNS	N	4	ANCHOR CHAIRS CS SHIPPED LOOSE	
GROUND LUG	O	1	GROUND LUG	



- NOTES:
- ALL WELDERS SHALL BE CERTIFIED PER D1.1 UNLIMITED. TANK TESTED PER APPENDIX J.4.2.2
 - ALL BOLTING FLANGES SHALL BE PER ASME B16.5
 - SEE ALL WELD DETAILS FOR DIMENSIONS & SPECTS. 1/8" TOLERANCE.
 - BOLT HOLES TO STRADDLE NATURAL CENTER LINE OF TANK. ±1/8" TOLERANCE.
 - FACE OF FLANGES TO BE SQUARE AND PLUMB. 1/8" TOLERANCE.
 - SEE PLAN FOR TRUE ORIENTATION OF ALL OPENINGS, ETC. WITH 1/4" TOLERANCE
 - 6A.NO FITTING PENETRATIONS THROUGH WELD SEAMS
 - 7.BOLT HOLES TO STRADDLE NATURAL CENTER LINE OF TANK ± 1/8" TOLERANCE.
 - 8.FACE OF FLANGES TO BE SQUARE AND PLUMB, ±1/8" TOLERANCE.
 - 9.SEE PLAN FOR TRUE ORIENTATION OF ALL OPENINGS ETC., ±1/4" TOLERANCE.
 - 10.TANK BUILT BUT NOT LABELED PER API 650.
 - 11.INSIDE OF TANK SHALL BE CLEAN & FREE OF DEBRIS BY THE USE OF SWEEPING THE INSIDE OF THE TANK
 - 12.TANK ESTIMATED DRY WEIGHT: 7,600 LBS.



NOTICE

THIS DRAWING IS THE PROPERTY OF CERTIFIED TANK & EQUIPMENT CO. CERTIFIED TANK & EQUIPMENT CO. RESERVES ITS RIGHTS IN THIS DRAWING, ITS SUBJECT MATTER, AND THE DESIGN THEREIN DISCLOSED. THIS COPY IS LOANED SUBJECT TO THE AGREEMENT AND CONDITION THAT IT OR ITS SUBJECT MATTER IS NOT TO BE DISCLOSED IN WHOLE OR IN PART, TO ANY OTHER PARTY, AND THAT IT SHALL NOT BE COPIED IN ANY FORM WITHOUT EXPRESS WRITTEN PERMISSION OF CERTIFIED TANK & EQUIPMENT CO. ACCEPTANCE OF THIS COPY WILL BE CONSTRUED AS ACCEPTANCE OF THE FOREGOING CONDITION.

REVISIONS		10'-0" x 12'-8" 7,400 GAL VERT. API 650 STAINLESS STEEL TANK PATRIOT ETHANOL PD#8824 QUOTE# PTRHNL.8.6.14		
		CERTIFIED TANK & EQUIPMENT COMPANY P.O. BOX 1000, JOLIET, ILLINOIS 61780		
		DRAWN BY AJL	DATE 10/22/14	SCALE
		CHECKED BY	DATE	DRAWING NO. 7.4KVFBC TSW-9843CA